



**LEAGUE OF WOMEN VOTERS
OF
NEW ROCHELLE BULLETIN**

Volume 9 Issue 1 February 2009

<i>Inside this issue:</i>		Board Meetings	
Coffee & Conversation	1	March 11	136 Pinebrook Blvd (Susan Fleming)
President's letter	2	April 15	17 Eck Place Liz Richman
City People & Issues	3	May 13	68 Sara Lane (Leona Newman)
LWV celebrates Women's History Month	4	June	Annual Meeting (TBA)
Museum of Arts and Culture (MAC)	4	All members are welcome to attend board meetings.	
National Popular Vote Study	6		
Annual Luncheon	7		



Coffee and conversation



Coffee and conversation is sponsored by the New Rochelle League of Women Voters and is part of an ongoing series of informal conversations between local leaders and the public in an informal setting. Coffee and conversation is held at the New Rochelle Public Library located on Lawton Street between Huguenot and Main Streets.

Friday, Feb 27th at 9:30 am - City Manager Chuck Strome will speak about the impact of the current economy on New Rochelle

Friday, March 20th at 9:30 am- Judith Weber, Vice President of New Rochelle Council of the Arts will speak about the importance of art in the present economy.

Friday, April 30th at 6:30 pm- School Superintendent, Richard Organisciak who will speak about the School Budget.

3-

f

President's Letter

The League of Women Voters of New Rochelle has a packed schedule of exciting upcoming events. Coffee and Conversation will feature Chuck Strome, New Rochelle's City Manager, on February 27 at the Library. Women's History Month will be celebrated with a film, "Iron Jawed Angels," also at the Library on March 9. This is an HBO film about the women's suffrage movement.

On March 27 the LWVNR is co-sponsoring a luncheon with other Sound Shore Leagues. New York's First Lady, Michelle Paige Paterson is guest speaker. She will be speaking on "The Healthy Kids, Healthy New York After-School Initiative," developed to fight the epidemic of childhood obesity. The luncheon will be at the Davenport Club in New Rochelle.

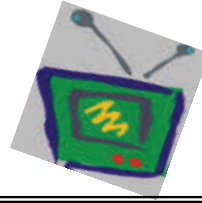
The LWVNR's cable show, "City People and Issues" has recent interviews (Ed. Note: See new schedule on P.3) with Mayor Noam Bramson, and also with Rosa Boone of the Westchester Coalition for the Hungry and Homeless .

We had a wonderful holiday party in December at the beautiful shop, Consign It on Main. We spent the evening with members and friends as well as with many of our elected officials. Musical entertainment was provided by a band of local musicians, who were pleased to be a part of the event. We were able to donate much needed money and food collected at our holiday party to Hope Community Services. As you can see, we have been busy with many great programs and services in our community. We always welcome members and volunteers for tasks large and small. Please don't hesitate to call or e-mail me with your ideas, thoughts, and questions.

*Sincerely,
Liz Richman
e-mail – eckonet@optonline.net
phone (914)576-2376*

City People and Issues

*The New Rochelle League of Women Voters
Cable Program*



City People and Issues appears on Cablevision Channel 76 Mondays at 7 p.m. and repeated Wednesdays at 9:30 p.m. This month we are featuring:

- I. Interview with **Jeffrey Coleman, New Rochelle Commissioner of Public Works**. He describes the organization and team work needed to coordinate snow removal, garbage collection and other city tasks throughout the year. Interviewed by Ina Aronow. This interview will be shown on February 2, 4, 16, and 18.

- II. Interview with **Marion L. Gray, writer and performer of American history and literature**. She discusses her area of expertise and performs music and recites poetry. Interviewed by Ina Aronow. This interview will be shown on February 9, 11, 23, and 25.

The show is recorded in the New Rochelle Cable Television studios. Producer is Ina Aronow, assisted by Leona Newman and Sylvia Kain. For further information or to participate, contact Ina Aronow at 636-6271.

Stay Informed...

Get up-to-date reminders and notices of local and national LWV events via email.

Send your email address to our membership chair, Joyce Goldklang at **Gemofamom1@aol.com** to get on our mailing list.



LWV of New Rochelle co-sponsors “New Rochelle Celebrates Women’s history”

"New Rochelle Celebrates Women's History Month" is being organized by the New Rochelle Council on the Arts. The LWV of New Rochelle is co-sponsoring the following two programs:

Monday, March 9th - HBO film *Iron Jawed Angels*, with Hilary Swank will be shown, followed by a discussion on the struggle for women's suffrage. 7 PM at the Ossie Davis Theater of the New Rochelle Public Library.

Tuesday, March 31st -*Women's Rights--An Ongoing Odyssey*, a dramatic presentation produced by the League of Women Voters and directed by Christopher Arena.
5:30 p.m. Reception in the City Hall Rotunda
6:30 p.m. Performance in the City Council Chambers
For more information go to www.newrochellearts.org.

Other co-sponsors are Iona College Council on the Arts, Media Loft, The Museum of Arts & Culture, New Rochelle Opera, New Rochelle Public Library, and The Poets Corner.

Museum of Arts and Culture (MAC) Celebrates Black History Month and Women’s History Month



MAC at New Rochelle High School will celebrate Black History Month in February and Women’s History Month in March with special exhibits and expanded programming that includes lectures and performances that are open to the public. The public is welcome to visit the MAC Mondays through Fridays from 9 am to 3 pm and Tuesday and Thursday evenings from 7 to 9 pm.

February 11-27th AP Art Show

March 2-12 National Art Honor Society (NAHS) exhibit

Black History Month

The MAC kicked off Black History Month with an exhibit of mixed media collage work by artist Robin J. Miller which ran through February 2nd. Other special programs included a lecture on black Hollywood by film critic and historian Donald Bogle on January 27th and the Second Annual African American Authors' Symposium with biographer Thulani Davis, historian Herb Boyd and author Linda Tarrant-Reid on February 10th.

February 26th "Harlem on My Mind"

A one-woman show by Julia Breanetta Simpson that celebrates the artists of the Harlem Renaissance. February 26th at 7:30 pm in the Linda Kelly Theater in House IV.

The Black History Month programs are made possible by support from the New York Council for the Humanities, the Black Enterprise B.R.I.D.G.E. Foundation, the City School District of New Rochelle, the New Rochelle Council on the Arts and the New Rochelle Fund for Educational Excellence.

Women's history month

March 18th "Women As Heroes/Teachers as Mentors"

Exhibit of works created by female art teachers and selected students using the theme of heroic women.

March 26th "Great Heroines of Opera"

Presented by the MAC and New Rochelle Opera on March 26th at 7:30 pm in the Linda Kelly Theater. The program will highlight the great soprano roles in classic opera and feature rising stars. Admission is free but there is a suggested donation; this program is made possible through the support of the Westchester Arts Council and the City of New Rochelle.

For more information about any of these exhibits and programs or directions visit the Museum of Arts & Culture website at www.dbmac.org.

LWV of New Rochelle is going green.

We are seeking a chair for our environmental committee to keep the community informed of the city's efforts to encourage green and sustainable development. Contact Liz Richman for more information.



The League of Women Voters National Popular Vote (NPV) Study

The LWVNR is participating in the NPV study and will hold a consensus meeting for all members on April 15th. The LWVUS has already taken a position in favor of abolishing the Electoral College and adopting the “direct popular vote” method of electing the President. The NPV proposes a way to accomplish this without amending the Constitution. We will educate ourselves further at the consensus meeting, and then decide on the pros and cons of the NPV alternative.

Because the states already have the right to implement a NPV, no change to the Constitution is necessary. It’s up to each state to appoint its own electors. Under the NPV, states would have to commit to cast their electoral votes to the winner of the national popular vote, not necessarily the candidate who wins the popular election in their state. Some feel this would be an affront to a state, to award votes to a candidate who did not carry the state.

Others feel that this is a better system than the current one, in which candidates only focus their campaigns in a few “battleground” states that determine electoral college victories. Under NPV, candidates would have to campaign to a broader segment of the electorate.

So far, the NPV has been enacted by four states: Hawaii, Maryland, New Jersey, and Illinois. It has passed the legislatures but not yet signed into law in Maine, Vermont, California, and Rhode Island. The NPV Compact will go into effect as soon as states who sign on represent the 270 electoral votes needed to win a Presidential election.

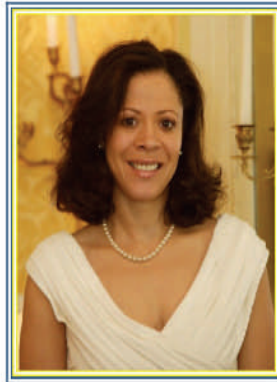
The LWVNR will vote on the NPV alternative on **April 15th, 7:30pm at 17 Eck Place**. All members are welcome to join us in forming our consensus. Please examine the materials ahead of time, which can be found at **<http://www.lwv.org/>** **NPV**. If you are unable to make this meeting and would like to be part of our consensus, please e-mail your responses (prior to April 15th) to eckonet@optonline.net. It will be an interesting and educational process to weigh the pros and cons of the NPV.

Liz Richman

Other local league events

**You are invited to the
League of Women Voters' Annual Luncheon**

Friday, March 27, 2009, 12:00 noon



Keynote Speaker:
New York's First Lady, Michelle Paige Paterson

Health care management expert, Michelle Paige Paterson,
will address her top priority as New York's First Lady:

**The *Healthy Kids, Healthy New York After-School Initiative*,
developed to fight the epidemic of childhood obesity.**

Davenport Club, 400 Davenport Ave, New Rochelle, NY

Lunch Fee is \$45 RSVP with payment by March 12th

To reserve your place,
please mail check to:

LWV
PO Box 811
Larchmont NY 10538

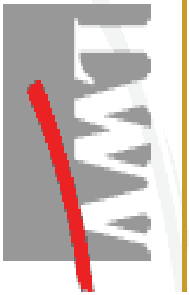
Questions:
lww10538@aol.com



Sponsored by:

- League of Women Voters of Larchmont/Mamaroneck
- League of Women Voters of New Rochelle
- League of Women Voters of Rye

.....
: **Friday, March 13** LWVW breakfast with Westchester
: County Executive **Andy Spano**, White Plains Library,
: 9:30 am.
:



Elizabeth Richman
17 Eck Place
New Rochelle, NY 10804

Label