



THE LEAGUE OF WOMEN VOTERS®
OF EAST NASSAU

voter

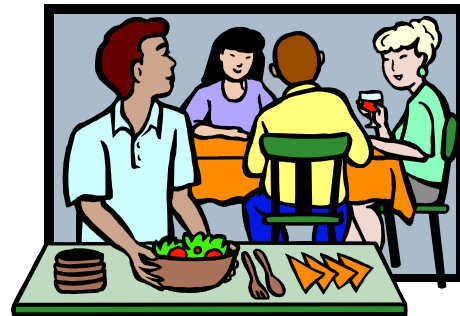
*At local, state and national levels
the League works to influence public policy
through education and advocacy.*

June/July, 2008

Please Join Us

For the 2008
LWVEN

Summer Social



Date: Sunday, August 17th

Time: 11:00 AM

Place: Home of Carole Goldfarb and Ted Goldstein
15 Wheatley Road, Old Westbury, NY 11568
516-626-3338

Cost: \$5.00/person contribution to LWV
Bring a dish if you can.

Spouses, friends, relatives, significant others and potential members are welcome. Please call Mary (731-0812) and let her know if you are coming, if you are bringing a dish, and what that dish will be.

Directions:

- LIE west to Glen Cove Rd (exit 39),
- Turn left at 1st light: left again at 2nd light onto Service Rd.
- Go 1 mile & turn left at 2nd light onto Wheatley Rd
- #15 is 1/10 mile on right.

Barbara's Corner



Meet your new "recycled" president. I look forward to seeing many of you at one of our exciting and informative meetings in the fall.

I hope many of you will join us at Carole and Ted's home and enjoy their beautiful outdoors, where we will have an opportunity to socialize.

The coming League year will have us very busy, whether it's *registering college students, studying the advisability of using the national popular vote compact as a method for electing the president, studying special districts in Nassau County, getting educated regarding health care or advocating for affordable housing.* If any of these interest you, please let me know. We will be setting up committees and would love you to be included.

We need you, for as little or as much time as you have available.

Have a great summer. If you have any questions, give me a call at 221-1948

League of Women Voters® of East Nassau

Barbara Epstein, President
Paula Blum, Editor
 1385 Lyon Place, Wantagh
 Tel/Fax: 785-3213/3263
paulablum@hotmail.com

Mary Price, Circulation
Lesley Pollak, Advertising

County Legislature Meeting Schedule

Monday, August 4 10:00 AM
 Monday, August 18 6:00 PM
 Wednesday, Sept. 3 10:00 AM

The Nassau County Legislature meets in the Legislative Chamber, 1st floor, 1550 Franklin Ave, Mineola, 571-4252. An admittance pass must be obtained on the first floor of the building, at the north elevator.

Town of Hempstead Meeting Schedule

Tuesday, July 8 10:30 AM
 Tuesday, August 5 10:30 AM
 Tuesday, Sept. 2 10:30 AM

The Hempstead Town Board meets at Town Hall, in the Nathan H. Bennett Pavilion, 489-5000.

Town of Oyster Bay Meeting Schedule

Tuesday, July 22 10:00 AM
 Tuesday, August 5 10:00 AM
 Tuesday, August 19 10:00 AM
 Tuesday, September 16 10:00 AM

The Oyster Bay Town Board meets at 54 Audrey Ave., Oyster Bay, 624-6390.

**Call before
attending.
Schedules
are subject
to change.**



LWVEN Board of Directors – 2007-2008

OFFICERS

President:	Barbara Epstein	221-1948
Vice Presidents:		
Environment:	Lorraine Newman	735-4876
Voter Service/HAVA:	Norma Schaeffer	489-3133
Bulletin Circulation/ Special Events:	Mary Price	731-0812
Secretary:	Shirlee Bergman	249-5276
Treasurer:	Barbara Josepher	

DIRECTORS:

Administrative Assistant:	Judy Schmertz	221-1576
Affordable Housing:	Barbara Epstein	221-1948
Bulletin:	Paula Blum	785-3213
Budget:	Lesley Pollak	731-1066
Education:	Maxine Stolzer	938-1172
Health Care, Advocacy:	Polly Nager	796-6211
Immigration:	Carole Goldfarb	626-3338
Membership:	Bobby Stim	731-1067
Programs:	Janet Spar	735-8673
Public Relations:	Elsie Yurasits	292-8045
Special Districts Study:	Mimi Hirsch	822-5086
Students Inside	Judy Schecter	221-5448
Albany/Civics:	Lillian Broad	781-8685

In This Issue...

1. Summer Social, Barbara's Corner
2. Legislative meeting dates, Officers & Directors, Keeping Connected
3. Reducing the use of plastics, Election 2008
4. Dedicated Volunteers, Voting Machines
5. & 6. VOTER Advertisers, Membership Enrollment Form
7. Photos of conventions, LWVEN stars
8. LWV Nassau County 2008 – 2009 Program

Keeping Connected

LWVUS & LWVUS Education Fund

1730 M Street, NW, Suite 1000, Washington, DC 20036-4508
 202-429-1965, www.lwv.org, lwv@lwv.org

LWVNYS & LWVNYS Education Foundation

62 Grand Street, Albany, NY 12207
 518-465-4162, www.lwvny.org, lwvny@lwvny.org, www.lwvny-bulletins.org

LWV of Nassau County:

Post Office Box 539, Point Lookout, NY 11569, 516-431-1628
www.lwvofnassaucounty.org, info@lwvofnassaucounty.org

Reducing the Use of Plastics

No matter what recycling symbol is on the bottom of your plastic water bottle or plate, you're better off using an inert, reusable material like glass or ceramic instead. This is because any plastic, particularly if you use it with hot beverages or foods, or if it's scratched or worn out, can leach chemicals into your foods and drinks.

The worst of the plastics appear to be those that are marked with the recycling label No.7, as these varieties may contain BPA.



And this is not even taking into account the environmental impacts of plastics, which kill more than 1 million seabirds, 100,000 marine mammals, and even more fish in the North Pacific alone, every year.

It may seem like plastics are an indispensable part of life, but we all have room, for our own health and the health of our planet, to reduce our use, and here's how:

1. Avoid plastic shopping bags. Use reusable canvas or cloth varieties instead. (This also applies to the plastic produce bags in the grocery store.)
2. Don't buy bottled water. Filter your own using a reverse-osmosis filter, and put it in a glass bottle. If you're concerned about it breaking, some companies now offer silicone sleeves that go on the outside to protect the bottle.
3. Avoid using plastic cups, utensils, dishware and food storage containers.
4. Buy toys made of natural fabrics instead of plastic.
5. Look for products that use minimal packaging, or buy in bulk.
6. Give up plastic wrap (and never use it to cover your food while it's heating).
7. Stop buying canned foods and drinks (the can linings contain plastic chemicals).
8. Look for non-plastic home items, like cloth shower curtains and wooden spoons instead of plastic ones.

(Source: The Daily Green)

Election 2008

To make sure all eligible voters are heard on Election Day, the LWVUS has adopted five core areas of election administration reform we are carrying out through our Public Advocacy for Voter Protection Project and other national efforts:

- Opposing ID and documentary proof-of-citizenship requirements
- Enhancing administration of statewide voter registration databases and guarding against wrongful or incorrect purging
- Protecting voters against unnecessary restrictions on voter registration
- Improving poll worker recruitment, training and supervision
- Strengthening polling place management and ballot design

In addition, the League of Women Voters Education Fund is continuing to educate voters by providing comprehensive state-by-state election and voting information on their Web site, VOTE411.org. This one-stop shop of election information has voting deadlines, information on candidates and polling places, as well as voting requirements.

There is too much at stake in this election for citizens to sit back and not make their voices heard. The League is working tirelessly to ensure every eligible citizen can participate in this critical election year and make an informed decision on Election Day.

I'm asking you to do your part to help strengthen the state of our union even more - stay informed with the League and get involved in this historic election!

Sincerely,

Mary G. Wilson
President, LWVUS



Our government... teaches the whole people by its example. If the government becomes the lawbreaker, it breeds contempt for law; it invites every man to become a law unto himself; it invites anarchy.

~Louis Brandeis

Many Thanks to our Dedicated Volunteers

By Norma Schaeffer

May was a very busy one for our East Nassau chapter. We started the last week in May, registering new employees at Lockheed Martin, which is located in East Meadow near Museum Row, to vote. **Judy Schmertz, Barbara Levine** and I participated. The employees were most cordial as they passed our desk, and we came away with coffee mugs and pens with their logo on them.

Our next project was to monitor the Hicksville Teachers' Union election. This involved nine schools; elementary, middle and high schools. Participating were **Alice Morganstern, Shirlee Bergman, Claire Gavrin, Connie Kanaraek, Mimi Hirsch, Roz Kuras, Lesley Pollak, Lillian Broad, Janet Spar, Mary Price, Bobby Stim, Judy Schmertz,** and **Norma Schaeffer**. LWV East Nassau thanks all of them for volunteering so readily when called upon.

Much gratitude is due **Lorraine Newman** and **Lesley Pollak** for scheduling the times, the schools, the people. I would be derelict not to mention four of our members who returned to the Hicksville Union office and counted several hundred ballots, putting in an eight hour day. Special thanks to **Claire, Connie, Lesley** and **Norma**.

On to June, when we monitored elections at the Rockville Centre and Freeport Housing Authorities. Our members were present in Rockville Centre from 7 A.M. to 9 P.M. They included **Lorraine Newman, Lillian Broad, Mimi Hirsch, Connie Kanarek, Shirley Bard,** and **Norma Schaeffer**, in two and three hour shifts. In Freeport, we were stationed at three different locations for two and three hour shifts. The Freeport volunteers were: **Elaine Lowell, Lesley Pollak, Janet Spar, Lorraine Newman, Barbara Epstein, Ann Ostling, Norma Schaeffer** and **Paula Blum**.

I try very hard not to always call upon the same people. We are all aware that our members do have other commitments, that there is life outside of League. Some are enjoyable plans, which we hope outnumber the medical reasons for not being available. Therefore, of necessity, you see some of the same names. All of the "times" that you're giving of yourselves is much appreciated. Thanks a bunch, you're helping me do my job. When you next pick up the phone and hear: "Hi, this is Norma" please don't disconnect!!!

New LI handicap accessible ballot markers have arrived - with unanticipated problems



Some of the new handicap-accessible ballot marker voting machines (BMDs) have been received by the Nassau County Board of Elections, but quite a large number of them have been rejected because they did not work properly. Since all of these machines had already been tested by the state BOE and certified as operating properly, one wonders whether they were tested properly by the state, and/or whether they were damaged in transit. Either possibility is not acceptable.

Why should these machines be so problematic? Nassau County is scheduled to receive 450 machines this year so that there will be one machine per polling place to accommodate handicapped voters. Next year, all lever voting machines are due to be replaced by new optical scan systems. The problems encountered now do not bode well for the future of these machines.

Our Nassau County BOE had asked the state to allow them to do the testing locally, to avoid the problems in shipping them to Albany, then to Nassau County, but their request was turned down. One of the state BOE spokespersons said that there had not been a widespread pattern of complaints of this nature, but that there can always be problems with shipping. We have heard, however, that the problem is more widespread than previously believed. Stay tuned!!



LWV of Nassau County

2008-2009 PROGRAM

1. Nassau County Board of Elections:

- (a) To work in cooperation with the Nassau County Board of Elections and the League of Women Voters of New York State to assure conformance with the National Voter Registration Act and the Help America Vote Act.
- (b) To assure an improved system of recruitment and training of election personnel.
- (c) To assure the acquisition and implementation of optical scan voting machines to replace the lever machines in 2009.
- (d) To assure a smooth transition in the implementation of the new voting systems
- (e) To assure adequate funding to achieve a fair and proper election process

2. Affordable Housing in Nassau County: To meet the current and future housing needs of residents, regardless of economic circumstances, with diversity of affordable housing opportunities and types ownership, rentals, single and multiple dwellings.

- (a) The LWV of Nassau County encourages the County to coordinate with Towns, Villages and School Districts when making decisions relative to infrastructure, taxes, incentives for economic development, public transportation and location of facilities.
- (b) Because collaborative community-based planning for long-term land use is essential, the League supports county initiatives that would encourage affordable homes through acquisition of previously developed sites for the purpose of redevelopment, and the sale or transfer of county-owned tax defaulted properties to towns and villages for the purpose of affordable housing.

3. Natural Resources: To promote action on State and National League environmental policy positions as they apply to Nassau County, with emphasis on:

- (a) active League participation in planning, decision-making and implementation of environmental quality and land use issues.
- (b) community education and action on measures that protect groundwater.

4. Nassau County Legislature: To monitor the County Legislature, its regular sessions and the committee meetings, by attendance of a League Representative.

5. Equal Employment Opportunities for Women: To support equal employment conditions including freedom from sexual harassment and equal pay for comparable work.

6. Social Policy: To support state and national positions, including welfare reform, child care, health care reform, domestic violence prevention, and reproductive rights, as they apply to Nassau County.

7. Transportation: To support the concept of mass transit as a public service with operating costs subsidized as they are for all public services and shared by all levels of government.

8. Special Districts: To study various special districts in Nassau County (excluding school and library districts) in terms of cost, efficiency, efficacy and value perceived by the consumers in the areas covered.